

Energy buffer storage tanks EPS

EPS-1W 300 - 2000



Universal use! For closed water heating systems. Simple incorporation of additional heating systems such as solar systems.

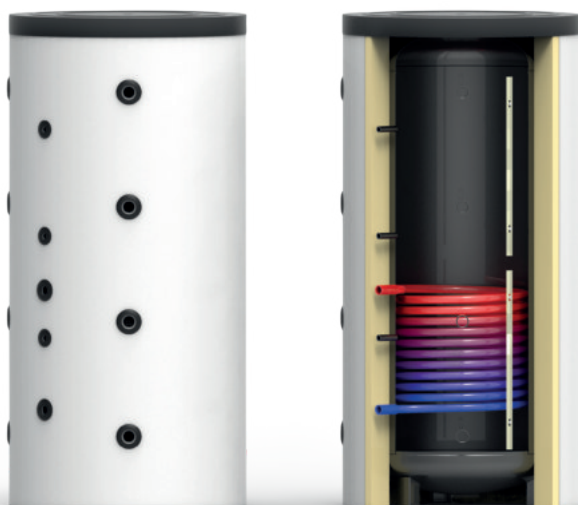


Illustration similar

- Energy efficiency classification:
 - Storage tank 300-500 with 75 mm Rigid foam composite insulation (HVI) Class A
 - Storage tank 300-500 with 75 mm PU rigid foam Class B
 - Storage tank 600-2000 with GREEN LINE- insulation (GL) Class C

- Material: Steel S235JR (interior bare, exterior primed)
- incl. insulation:
 - Up to 500 litres: 75 mm rigid foam insulation and 5 mm foil jacket in RAL 9006 silver pre-fitted;
 - 600-2000 litres: 120 mm GREEN LINE insulation, 100 mm cover insulation, and 5 mm foil jacket in RAL 9006 silver, removable
- Operating pressure: max. 3 bar
- Test pressure: max. 6 bar
- Temperature: max. 110°C
- Equipment:
 - 1 smooth tube heat exchanger for solar with 1" internal thread, custom sizes, inlet bends and baffle plates on request, (sensor rail and zip fastening from 600 litres)
- Connections:
 - At the side 8 sleeves with 1/2" internal thread*³, central 3 sleeves with 1/2" internal thread*³, venting with 1/4" internal thread, communicating buffer connection with all energy buffer storage tanks possible
- Please note:
 - EPS 120 is also usable as a hydraulic separator or in combination with a heat pump.



Technical data

EPS-1W			300	500	600	600	825	1000	1000	1150	1500	2000		
Key figures														
Nominal volume		Ltr.	291	493	597	597	810	951	951	1098	1484	1908		
Heat exchanger surface	WT	m ²	2,0				2,8	3,0			3,5			
Heat exchanger content	WT	l	10,94				15,32	16,42			19,15			
Type of insulation			Premium	Standard	Premium	Standard	Classic							
Insulation thickness		mm	75 HVI	75 PU	75 HVI	75 PU	120 Green Line* ³							
Energy efficiency class			A	B	A	B	C							
Stand-by heat expenditure		Wh	49	69	58	83	104	104	117	140	140	145	166	187
Test pressure		bar	6											
Perm. operating over-pressure max.	Hot water	bar	3											
Perm. operating temperature max.	Hot water	°C	110											
Load profile			XXL	3XL	3XL	3XL	3XL	4XL	4XL	4XL	4XL	4XL		
Storage tank mounting			Feet									Base ring		
Article No. Premium			330810	330811										
Article No. Standard			330812	330817										
Article No. Classic						600106	600188	600107	600108	600176	600109	600110	600111	



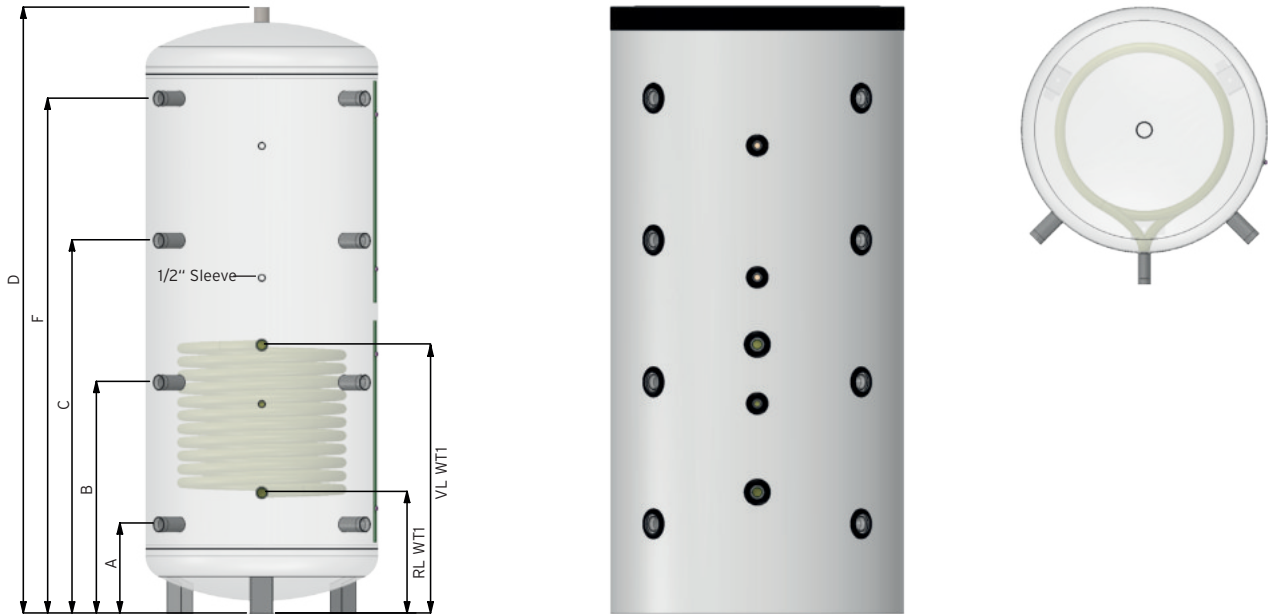
Less heat loss!
Order now with
160 mm
or 200 mm
GREEN LINE!

See page 13



Connection diagram

Schematic representation



Dimensions / Connections				300	500	600	600	825	1000	1000	1150	1500	2000	
Diameter without insulation	Green Line		mm	-		650		790			850	990	1100	
Diameter with insulation			mm	-		850		990			1050	1190	1300	
Height without insulation		D	mm	-		1895	1445	1745	2045		1765	2025	2174	2161
Height with insulation			mm	-		1945	1495	1795	2095		1815	2075	2224	2211
Tilted dimension			mm	-		1909	1498	1776	2086		1788	2061	2238	2235
Diameter with insulation	75 PU or 75 HVI		mm	660	810	-								
Height with insulation		D	mm	1719	1705	-								
Tilted dimension			mm	1837	1864	-								
Connection sizes				1 " internal thread										
Return	RL	WT	mm	313	339	329	399	394	412	404	422	452	471	
Supply	VL	WT	mm	763	839	879	729	894	912	904	922	1052	1071	
Connection sizes				1 1/2 " internal thread										
Sleeves		A	mm	210	265	225	290	289	305	300	315	345	364	
		B	mm	777	625	691	580	680	785	690	781	841	844	
		C	mm	1474	1016	1158	870	1070	1265	1080	1248	1339	1324	
		F	mm	-	1436	1625	1160	1460	1745	1470	1715	1836	1804	
Venting		D		1 1/4 " internal thread										
3 sleeves central				1 / 2 " internal thread										

EPS 300: side-mounted 6 sleeves with 1/2" internal thread, central 2 sleeves with 1/2" internal thread

EPS 300: all connectors at 180°
EPS 500: all connectors at 45°
EPS ab 600: all connectors at 90°

* See glossary page 94.